

# Mini example automatic reporting with knitR: LVA-Evaluierung\*

Der.Fuerst

June 16, 2016

## Contents

<b>1</b>	<b>Data description</b>	<b>2</b>
<b>2</b>	<b>Evaluation results</b>	<b>2</b>
<b>3</b>	<b>Plots of each class</b>	<b>4</b>
3.1	Class 127 . . . . .	4
3.2	Class 128 . . . . .	5
3.3	Class 382 . . . . .	6
3.4	Class 587 . . . . .	7
3.5	Class 759 . . . . .	8
3.6	Class 944 . . . . .	9
3.7	Class 1694 . . . . .	10
3.8	Class 1756 . . . . .	11
3.9	Class 2036 . . . . .	12
3.10	Class 2076 . . . . .	13
3.11	Class 2410 . . . . .	14
3.12	Class 2433 . . . . .	15
3.13	Class 2725 . . . . .	16
3.14	Class 2729 . . . . .	17
3.15	Class 2732 . . . . .	18
3.16	Class 2770 . . . . .	19
3.17	Class 3855 . . . . .	20
3.18	Class 3962 . . . . .	21

---

\*This report was created on [2016-06-16 13:35:24](#), all blue parts are generated automatically via R

# 1 Data description

The dataset (see Table 1) contains teaching evaluations (on an integer scale from 1 to 7) of different lectures (identified by BATCHNO) given by *Der.Fuerst*. Altogether 18 lectures were evaluated by a total of 464 students, where 366 were female and 98 were male. Figure 1 depicts the number of students per lecture.

FORM_ID	BATCHNO	BATCHPGC	LeiterIn	ECTS	SEX	G01	G02	G03	G04
14076	127	26	Der.Fuerst	4	1	5	7	6	7
14076	127	26	Der.Fuerst	4	1	5	7	6	6
14076	127	26	Der.Fuerst	4	1	5	6	7	7
14076	127	26	Der.Fuerst	4	1	5	6	6	5
14076	127	26	Der.Fuerst	4	1	6	4	4	5
14076	127	26	Der.Fuerst	4	1	6	6	6	5

Table 1: First 6 lines and 10 columns of the dataset

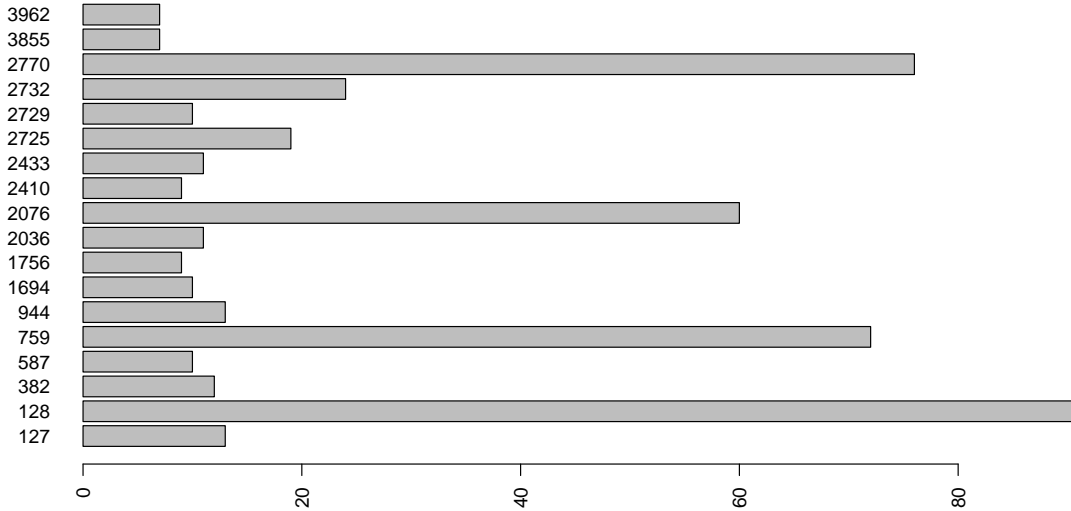


Figure 1: Number of students per lecture

# 2 Evaluation results

Figure 2 depicts boxplots per question for the lecture with BATCHNO 127, Figure 3 shows the overall results per question. Altogether *Der.Fuerst* was very well evaluated - for question G04 (referring to professional competence) his overall average rating was an amazing 6.33.

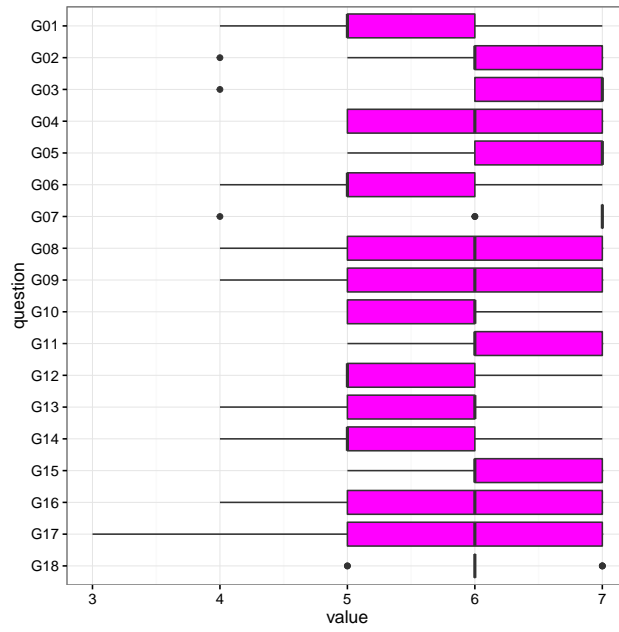


Figure 2: Boxplot per question for the lecture with BATCHNO 127

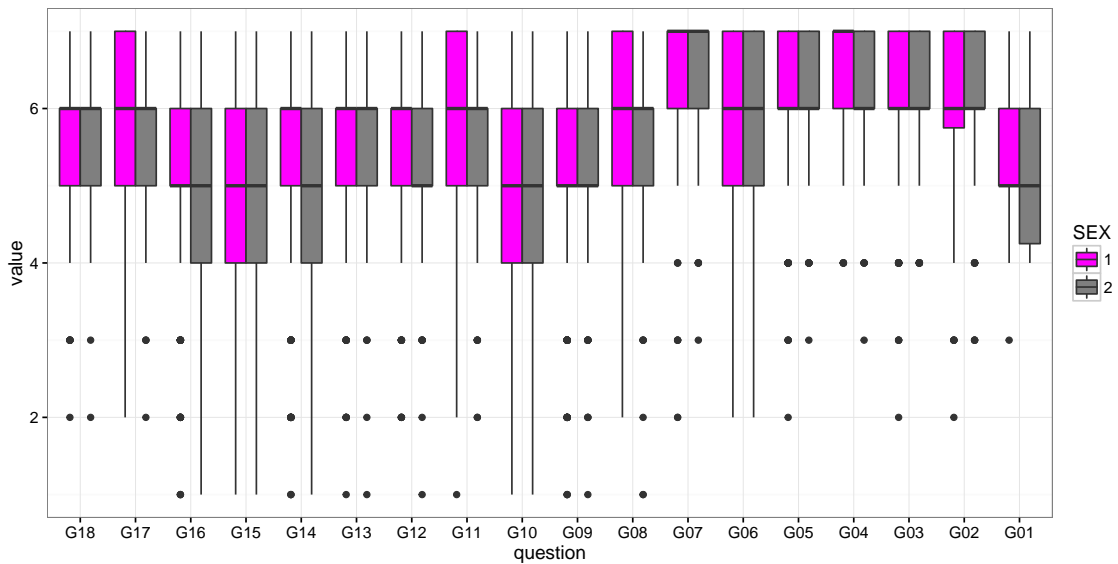


Figure 3: Boxplot per question overall

### 3 Plots of each class

#### 3.1 Class 127

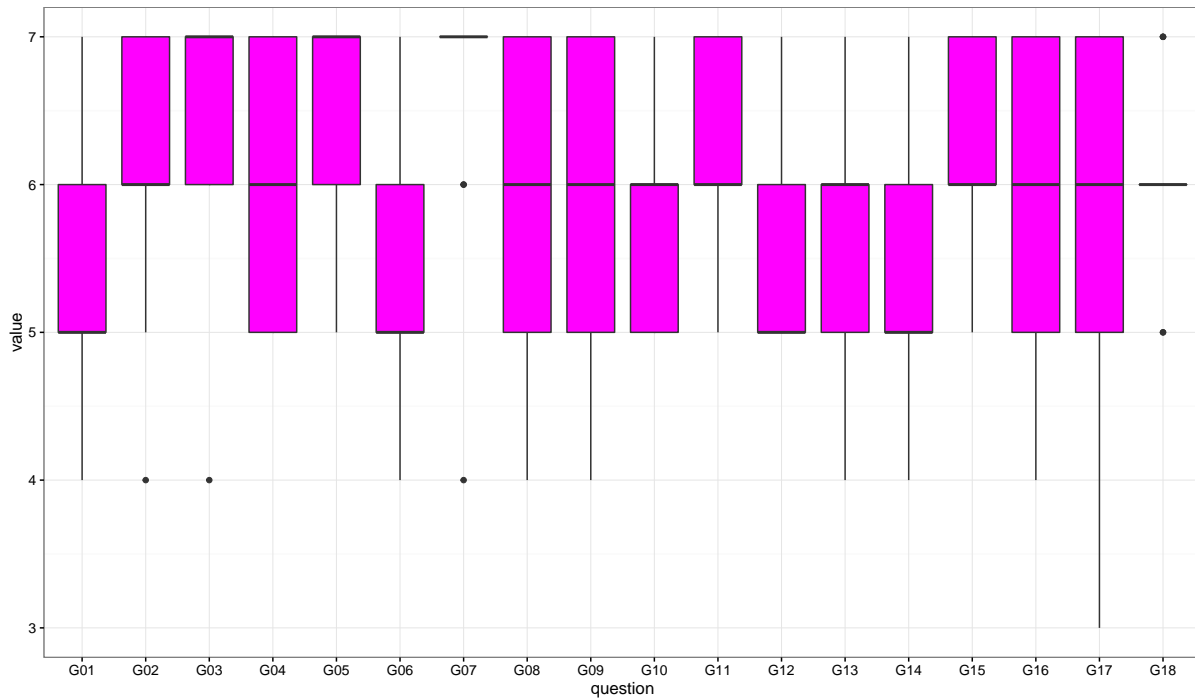


Figure 4: Boxplot class 127

variable	value.min	value.max	value.mean	value.median	value.sd
G01	4.00	7.00	5.31	5.00	0.75
G02	4.00	7.00	6.23	6.00	0.93
G03	4.00	7.00	6.38	7.00	0.87
G04	5.00	7.00	6.15	6.00	0.90
G05	5.00	7.00	6.54	7.00	0.66
G06	4.00	7.00	5.38	5.00	1.12
G07	4.00	7.00	6.62	7.00	0.87
G08	4.00	7.00	5.92	6.00	0.95
G09	4.00	7.00	5.77	6.00	1.17
G10	5.00	7.00	5.92	6.00	0.76
G11	5.00	7.00	6.23	6.00	0.73
G12	5.00	7.00	5.69	5.00	0.85
G13	4.00	7.00	5.85	6.00	0.90
G14	4.00	7.00	5.31	5.00	0.95
G15	5.00	7.00	6.08	6.00	0.76
G16	4.00	7.00	5.77	6.00	1.01
G17	3.00	7.00	5.77	6.00	1.30
G18	5.00	7.00	6.08	6.00	0.64

Table 2: Summary class 127

### 3.2 Class 128

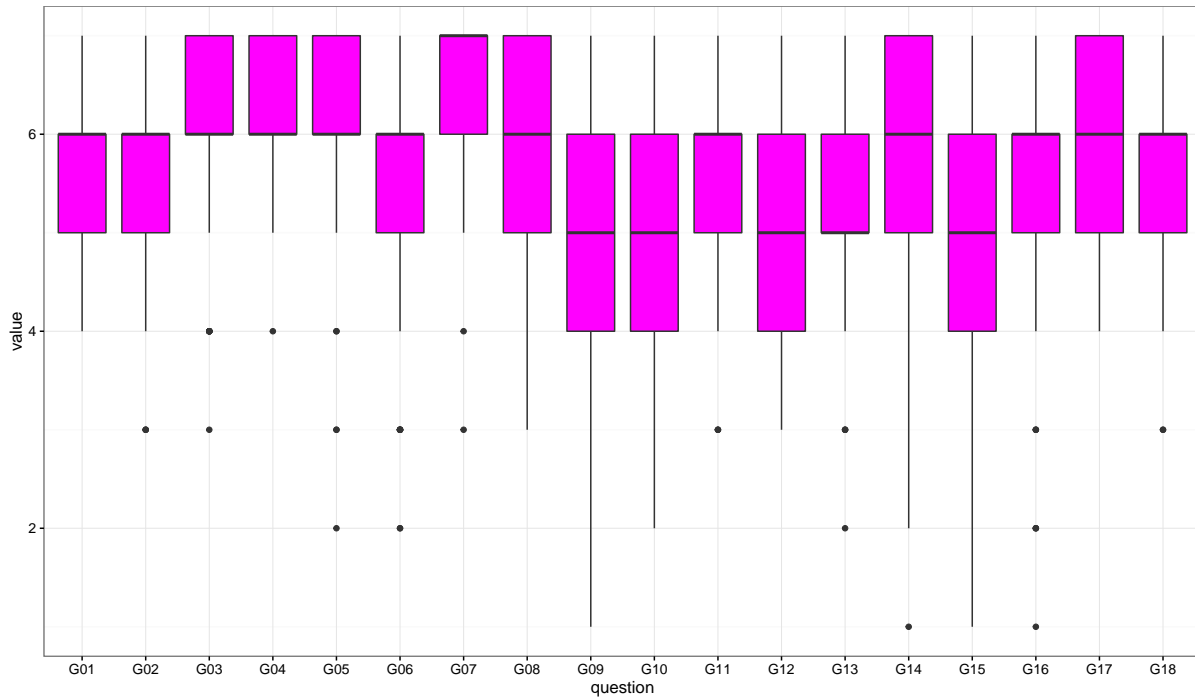


Figure 5: Boxplot class 128

variable	value.min	value.max	value.mean	value.median	value.sd
G01	4.00	7.00	5.42	6.00	0.82
G02	3.00	7.00	5.75	6.00	1.04
G03	3.00	7.00	6.04	6.00	1.00
G04	4.00	7.00	6.14	6.00	0.77
G05	2.00	7.00	6.12	6.00	1.00
G06	2.00	7.00	5.43	6.00	1.31
G07	3.00	7.00	6.51	7.00	0.78
G08	3.00	7.00	5.76	6.00	1.06
G09	1.00	7.00	5.02	5.00	1.37
G10	2.00	7.00	5.19	5.00	1.23
G11	3.00	7.00	5.77	6.00	0.99
G12	3.00	7.00	5.24	5.00	1.09
G13	2.00	7.00	5.33	5.00	1.06
G14	1.00	7.00	5.48	6.00	1.49
G15	1.00	7.00	4.99	5.00	1.53
G16	1.00	7.00	5.28	6.00	1.26
G17	4.00	7.00	5.97	6.00	0.92
G18	3.00	7.00	5.50	6.00	0.90

Table 3: Summary class 128

### 3.3 Class 382

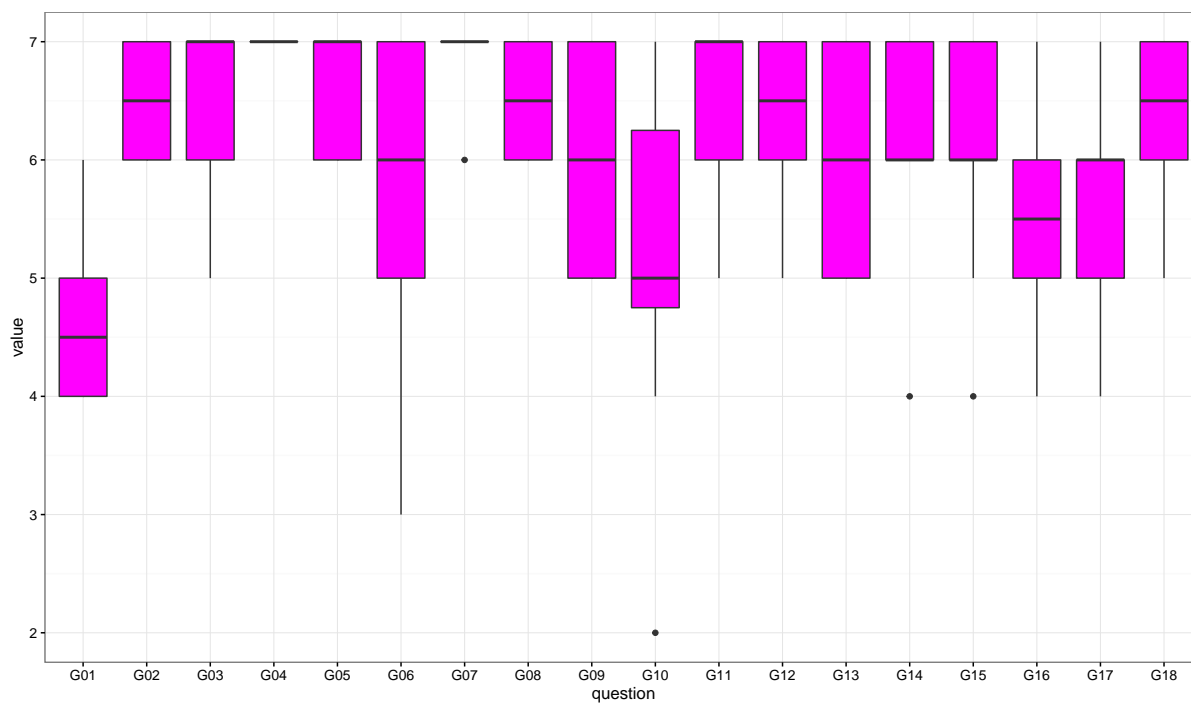


Figure 6: Boxplot class 382

variable	value.min	value.max	value.mean	value.median	value.sd
G01	4.00	6.00	4.58	4.50	0.67
G02	6.00	7.00	6.50	6.50	0.52
G03	5.00	7.00	6.58	7.00	0.67
G04	7.00	7.00	7.00	7.00	0.00
G05	6.00	7.00	6.67	7.00	0.49
G06	3.00	7.00	5.83	6.00	1.19
G07	6.00	7.00	6.92	7.00	0.29
G08	6.00	7.00	6.50	6.50	0.52
G09	5.00	7.00	6.08	6.00	0.90
G10	2.00	7.00	5.25	5.00	1.48
G11	5.00	7.00	6.50	7.00	0.67
G12	5.00	7.00	6.33	6.50	0.78
G13	5.00	7.00	6.00	6.00	0.85
G14	4.00	7.00	6.17	6.00	0.83
G15	4.00	7.00	6.08	6.00	0.90
G16	4.00	7.00	5.50	5.50	1.00
G17	4.00	7.00	5.58	6.00	0.79
G18	5.00	7.00	6.42	6.50	0.67

Table 4: Summary class 382

### 3.4 Class 587

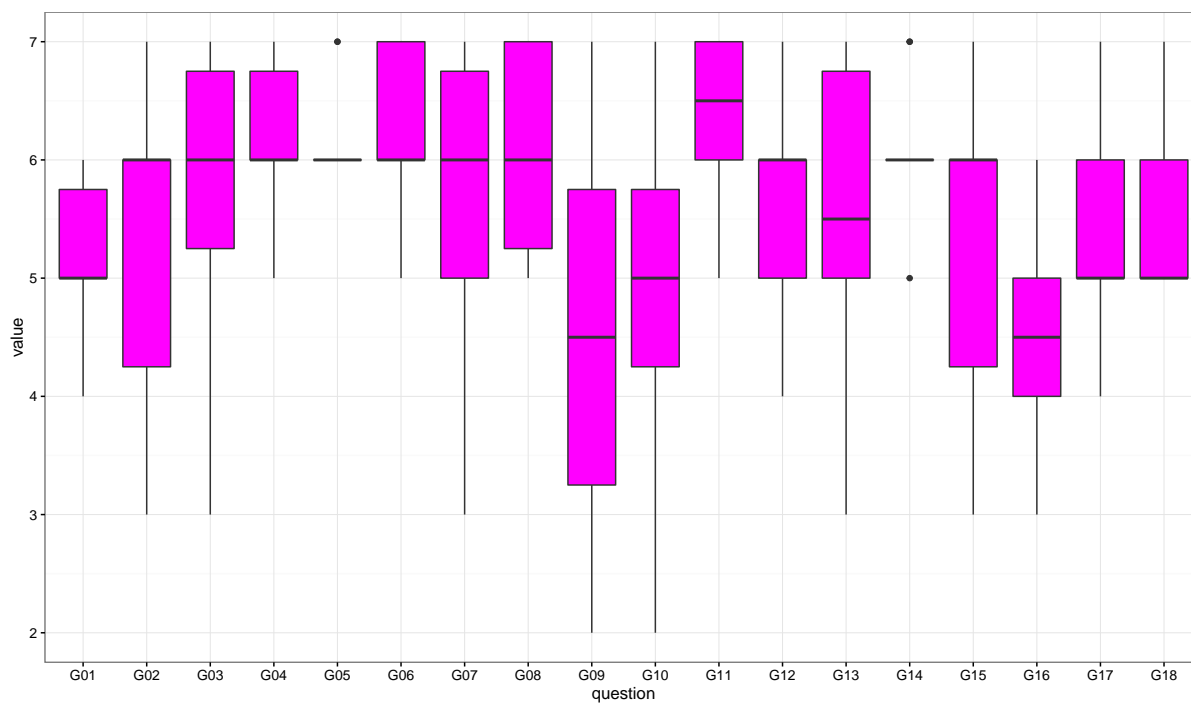


Figure 7: Boxplot class 587

variable	value.min	value.max	value.mean	value.median	value.sd
G01	4.00	6.00	5.10	5.00	0.74
G02	3.00	7.00	5.30	6.00	1.25
G03	3.00	7.00	5.80	6.00	1.23
G04	5.00	7.00	6.10	6.00	0.74
G05	6.00	7.00	6.20	6.00	0.42
G06	5.00	7.00	6.20	6.00	0.79
G07	3.00	7.00	5.60	6.00	1.35
G08	5.00	7.00	6.10	6.00	0.88
G09	2.00	7.00	4.60	4.50	1.71
G10	2.00	7.00	5.00	5.00	1.49
G11	5.00	7.00	6.30	6.50	0.82
G12	4.00	7.00	5.50	6.00	0.97
G13	3.00	7.00	5.60	5.50	1.26
G14	5.00	7.00	6.10	6.00	0.57
G15	3.00	7.00	5.30	6.00	1.25
G16	3.00	6.00	4.50	4.50	0.85
G17	4.00	7.00	5.40	5.00	0.84
G18	5.00	7.00	5.50	5.00	0.71

Table 5: Summary class 587

### 3.5 Class 759

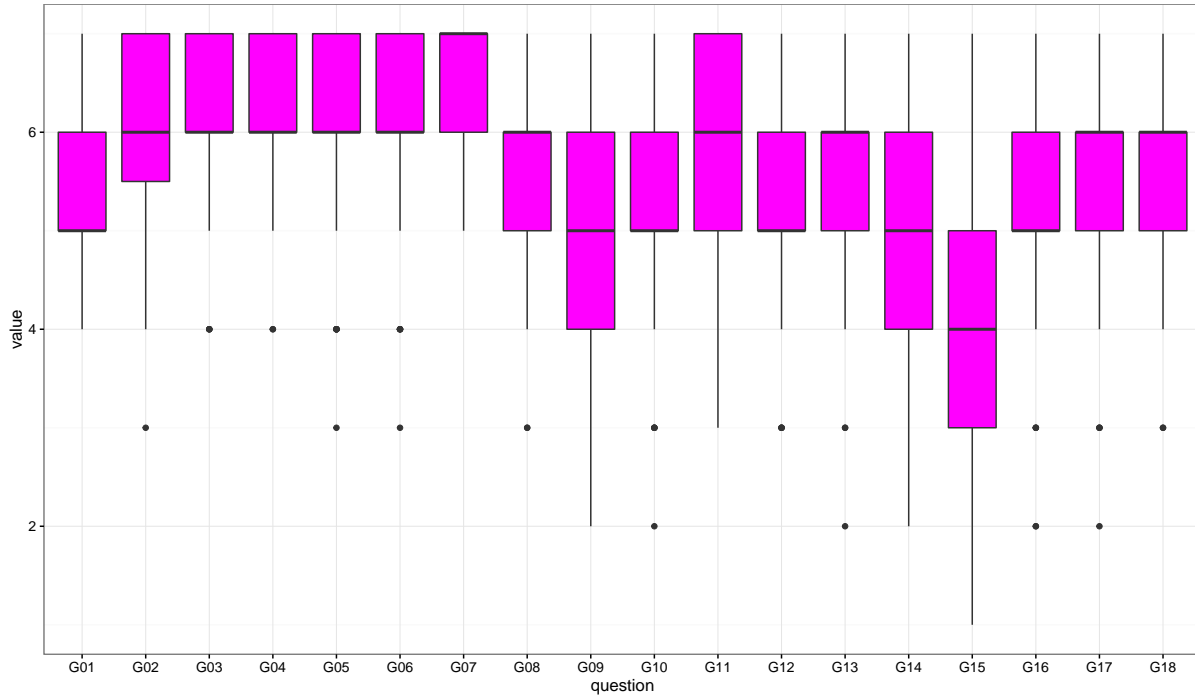


Figure 8: Boxplot class 759

variable	value.min	value.max	value.mean	value.median	value.sd
G01	4.00	7.00	5.21	5.00	0.73
G02	3.00	7.00	5.97	6.00	1.01
G03	4.00	7.00	6.03	6.00	0.86
G04	4.00	7.00	6.33	6.00	0.75
G05	3.00	7.00	6.00	6.00	0.96
G06	3.00	7.00	5.97	6.00	0.94
G07	5.00	7.00	6.50	7.00	0.63
G08	3.00	7.00	5.68	6.00	0.95
G09	2.00	7.00	5.06	5.00	1.17
G10	2.00	7.00	5.32	5.00	1.16
G11	3.00	7.00	5.86	6.00	1.01
G12	3.00	7.00	5.36	5.00	1.06
G13	2.00	7.00	5.46	6.00	0.99
G14	2.00	7.00	4.62	5.00	1.56
G15	1.00	7.00	4.00	4.00	1.66
G16	2.00	7.00	5.13	5.00	1.06
G17	2.00	7.00	5.73	6.00	1.07
G18	3.00	7.00	5.56	6.00	0.87

Table 6: Summary class 759



### 3.6 Class 944

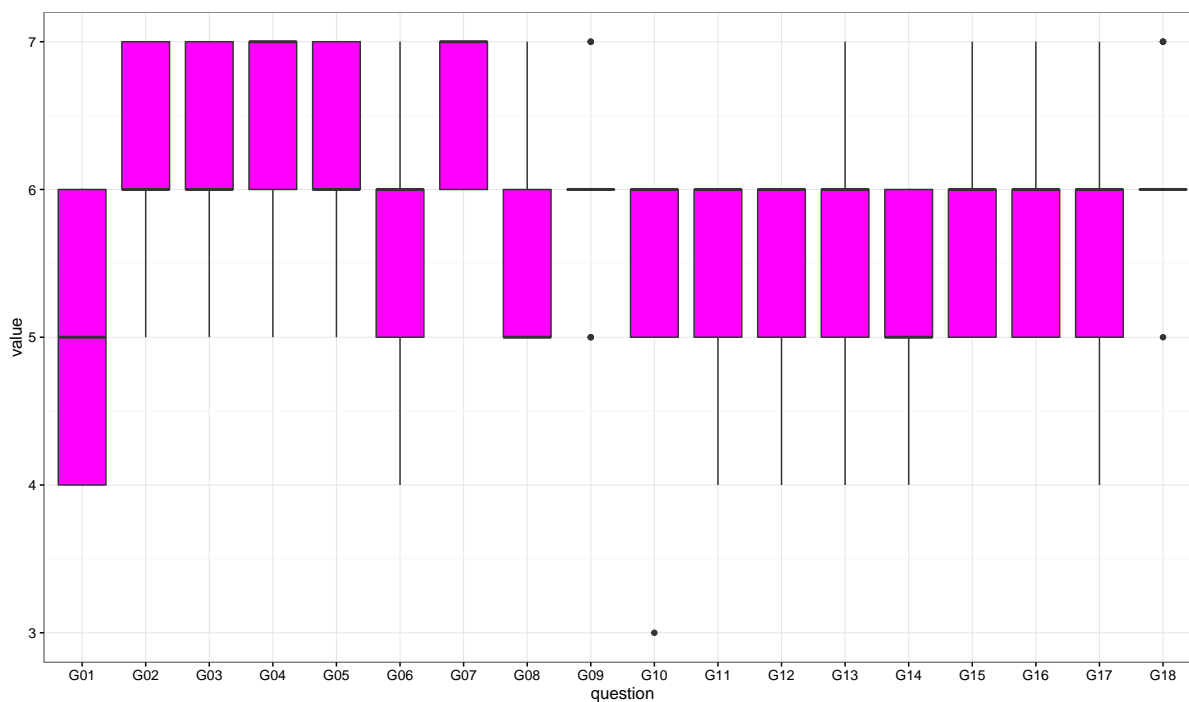


Figure 9: Boxplot class 944

variable	value.min	value.max	value.mean	value.median	value.sd
G01	4.00	6.00	5.00	5.00	0.82
G02	5.00	7.00	6.31	6.00	0.63
G03	5.00	7.00	6.38	6.00	0.65
G04	5.00	7.00	6.54	7.00	0.66
G05	5.00	7.00	6.23	6.00	0.73
G06	4.00	7.00	5.85	6.00	0.90
G07	6.00	7.00	6.54	7.00	0.52
G08	5.00	7.00	5.62	5.00	0.77
G09	5.00	7.00	6.00	6.00	0.60
G10	3.00	6.00	5.46	6.00	0.88
G11	4.00	6.00	5.54	6.00	0.78
G12	4.00	6.00	5.58	6.00	0.67
G13	4.00	7.00	5.62	6.00	0.77
G14	4.00	6.00	5.15	5.00	0.80
G15	5.00	7.00	5.69	6.00	0.63
G16	5.00	7.00	5.77	6.00	0.73
G17	4.00	7.00	5.69	6.00	0.95
G18	5.00	7.00	6.15	6.00	0.55

Table 7: Summary class 944

### 3.7 Class 1694

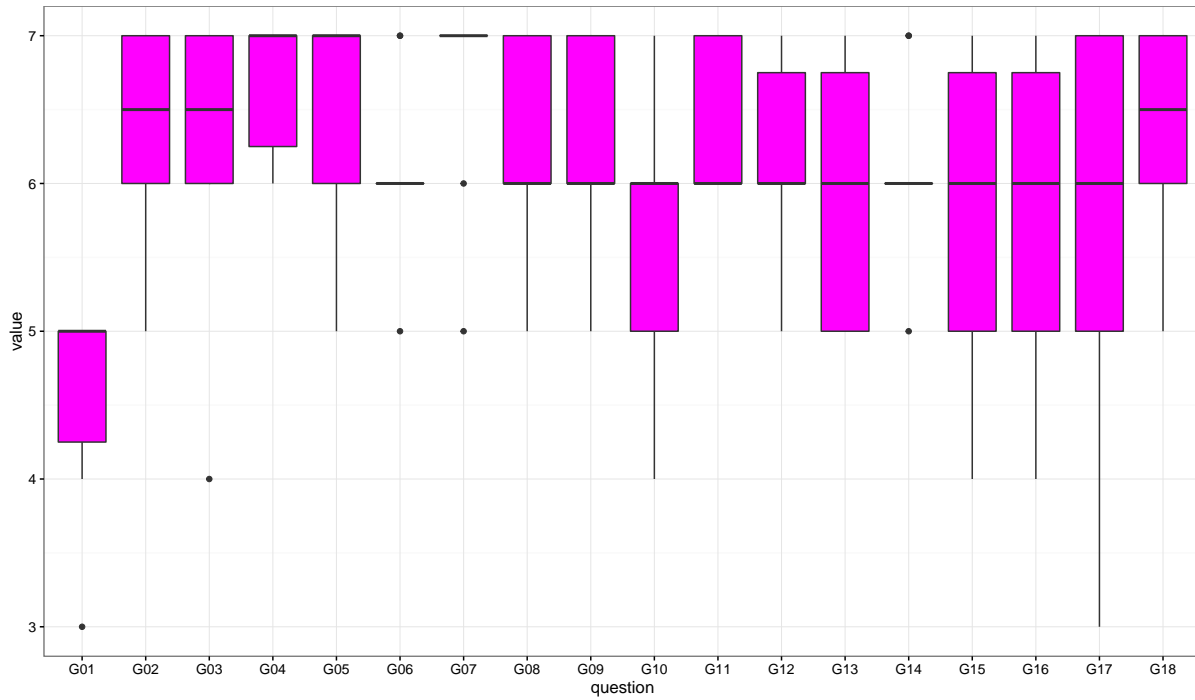


Figure 10: Boxplot class 1694

variable	value.min	value.max	value.mean	value.median	value.sd
G01	3.00	5.00	4.60	5.00	0.70
G02	5.00	7.00	6.40	6.50	0.70
G03	4.00	7.00	6.30	6.50	0.95
G04	6.00	7.00	6.70	7.00	0.48
G05	5.00	7.00	6.50	7.00	0.71
G06	5.00	7.00	6.10	6.00	0.57
G07	5.00	7.00	6.70	7.00	0.67
G08	5.00	7.00	6.30	6.00	0.67
G09	5.00	7.00	6.20	6.00	0.79
G10	4.00	7.00	5.60	6.00	0.84
G11	6.00	7.00	6.40	6.00	0.52
G12	5.00	7.00	6.10	6.00	0.74
G13	5.00	7.00	5.90	6.00	0.88
G14	5.00	7.00	6.10	6.00	0.57
G15	4.00	7.00	5.80	6.00	1.03
G16	4.00	7.00	5.80	6.00	1.03
G17	3.00	7.00	5.56	6.00	1.42
G18	5.00	7.00	6.30	6.50	0.82

Table 8: Summary class 1694

### 3.8 Class 1756

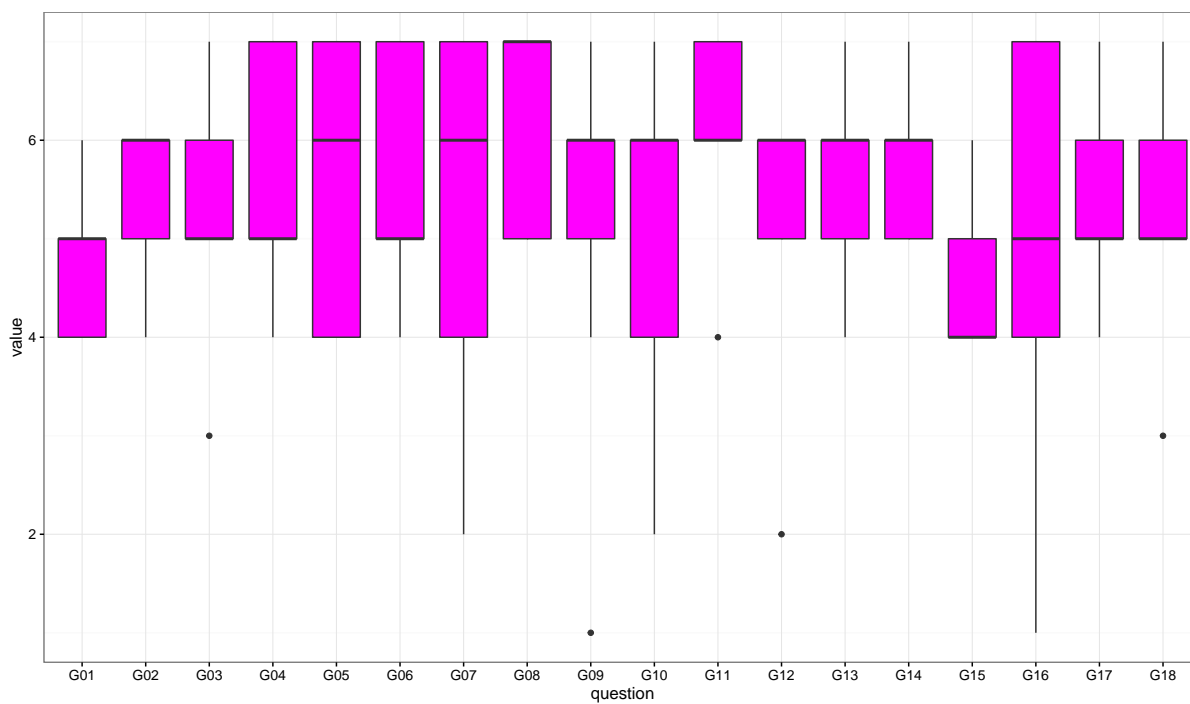


Figure 11: Boxplot class 1756

variable	value.min	value.max	value.mean	value.median	value.sd
G01	4.00	6.00	4.78	5.00	0.67
G02	4.00	6.00	5.33	6.00	0.87
G03	3.00	7.00	5.22	5.00	1.09
G04	4.00	7.00	5.67	5.00	1.12
G05	4.00	7.00	5.56	6.00	1.33
G06	4.00	7.00	5.56	5.00	1.24
G07	2.00	7.00	5.33	6.00	1.73
G08	5.00	7.00	6.22	7.00	0.97
G09	1.00	7.00	5.11	6.00	1.76
G10	2.00	7.00	5.11	6.00	1.76
G11	4.00	7.00	6.22	6.00	0.97
G12	2.00	6.00	5.22	6.00	1.30
G13	4.00	7.00	5.44	6.00	1.01
G14	5.00	7.00	5.78	6.00	0.67
G15	4.00	6.00	4.56	4.00	0.73
G16	1.00	7.00	4.89	5.00	2.09
G17	4.00	7.00	5.33	5.00	1.12
G18	3.00	7.00	5.22	5.00	1.09

Table 9: Summary class 1756

### 3.9 Class 2036

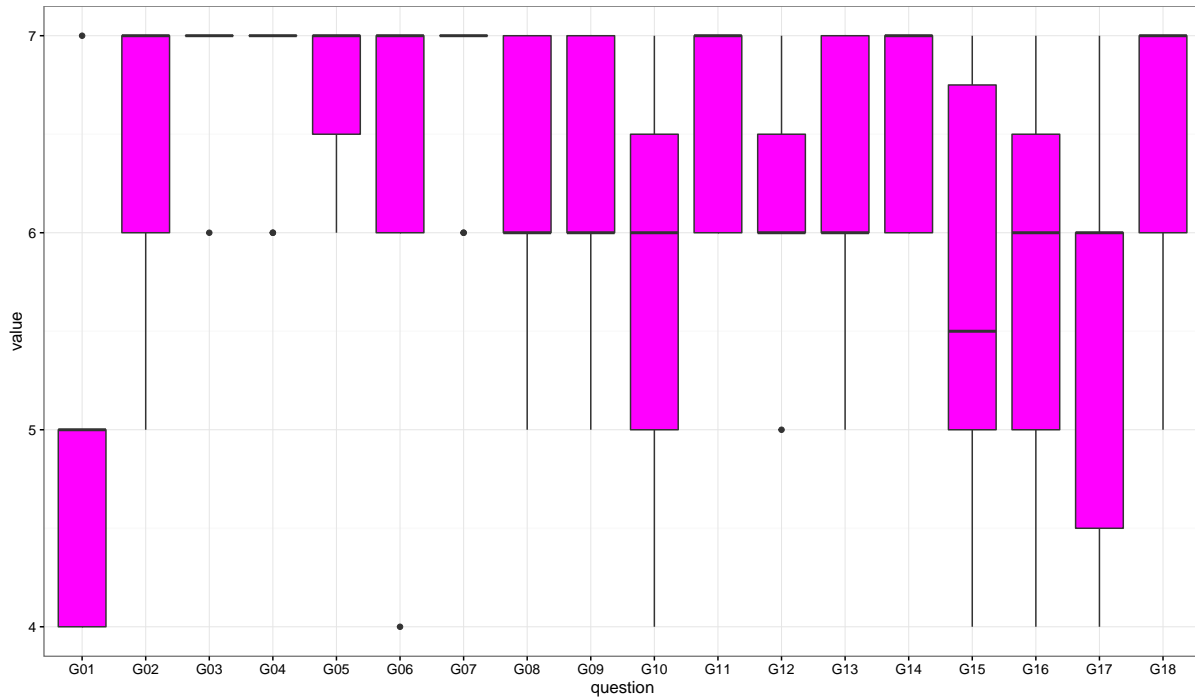


Figure 12: Boxplot class 2036

variable	value.min	value.max	value.mean	value.median	value.sd
G01	4.00	7.00	4.82	5.00	0.87
G02	5.00	7.00	6.45	7.00	0.69
G03	6.00	7.00	6.91	7.00	0.30
G04	6.00	7.00	6.82	7.00	0.40
G05	6.00	7.00	6.73	7.00	0.47
G06	4.00	7.00	6.36	7.00	0.92
G07	6.00	7.00	6.82	7.00	0.40
G08	5.00	7.00	6.18	6.00	0.75
G09	5.00	7.00	6.36	6.00	0.67
G10	4.00	7.00	5.73	6.00	1.10
G11	6.00	7.00	6.55	7.00	0.52
G12	5.00	7.00	6.18	6.00	0.60
G13	5.00	7.00	6.20	6.00	0.79
G14	6.00	7.00	6.55	7.00	0.52
G15	4.00	7.00	5.60	5.50	1.17
G16	4.00	7.00	5.64	6.00	1.12
G17	4.00	7.00	5.45	6.00	1.13
G18	5.00	7.00	6.45	7.00	0.69

Table 10: Summary class 2036

### 3.10 Class 2076

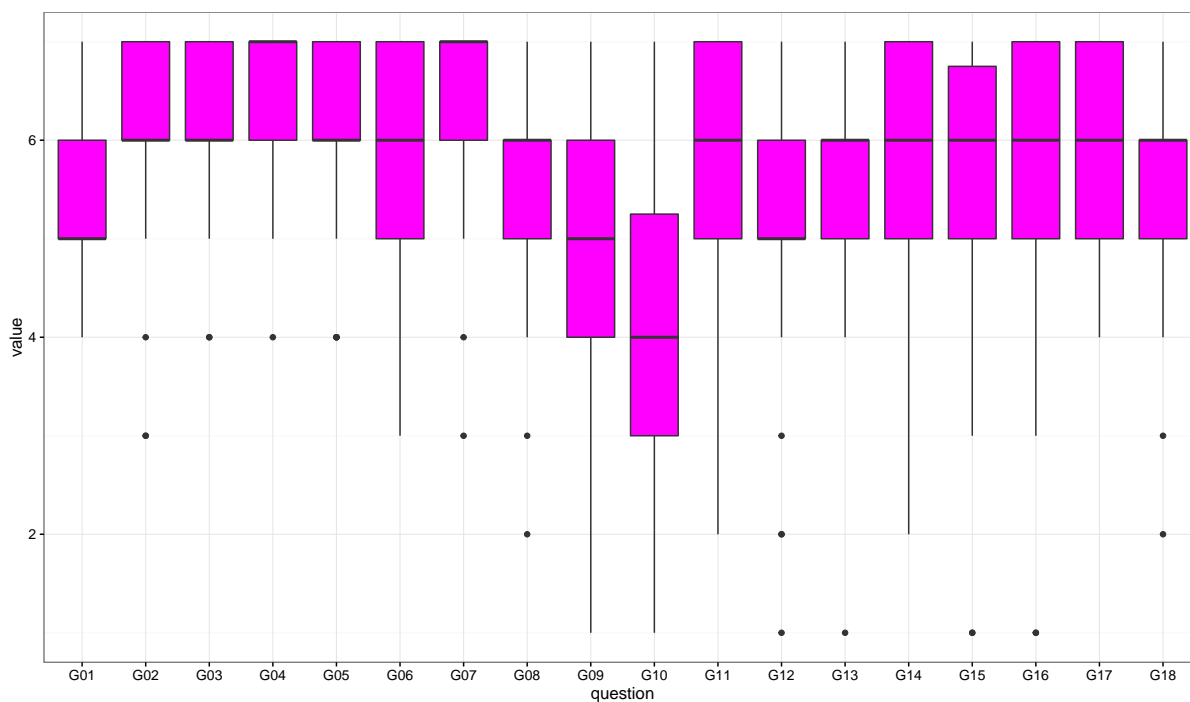


Figure 13: Boxplot class 2076

variable	value.min	value.max	value.mean	value.median	value.sd
G01	4.00	7.00	5.12	5.00	0.80
G02	3.00	7.00	6.02	6.00	0.93
G03	4.00	7.00	6.27	6.00	0.80
G04	4.00	7.00	6.42	7.00	0.70
G05	4.00	7.00	6.17	6.00	0.92
G06	3.00	7.00	5.88	6.00	1.04
G07	3.00	7.00	6.45	7.00	0.79
G08	2.00	7.00	5.75	6.00	1.05
G09	1.00	7.00	4.93	5.00	1.41
G10	1.00	7.00	4.30	4.00	1.50
G11	2.00	7.00	5.70	6.00	1.27
G12	1.00	7.00	5.22	5.00	1.26
G13	1.00	7.00	5.59	6.00	1.08
G14	2.00	7.00	5.81	6.00	1.11
G15	1.00	7.00	5.43	6.00	1.45
G16	1.00	7.00	5.57	6.00	1.38
G17	4.00	7.00	5.87	6.00	1.07
G18	2.00	7.00	5.72	6.00	1.06

Table 11: Summary class 2076

### 3.11 Class 2410

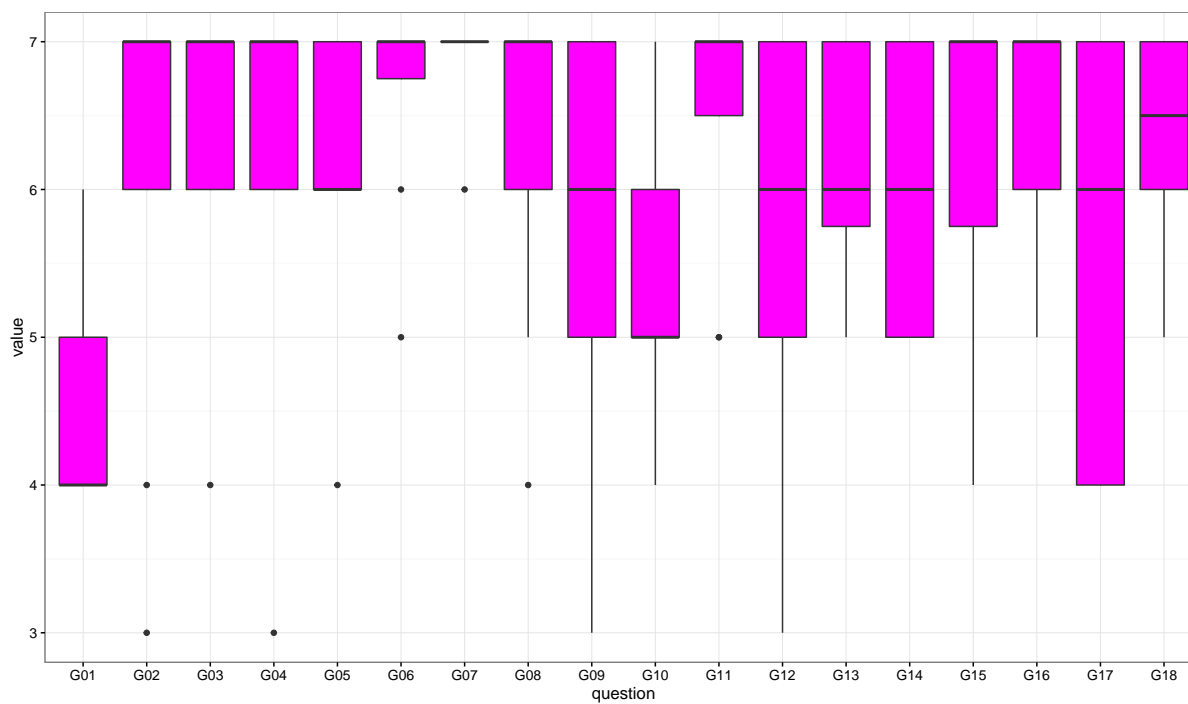


Figure 14: Boxplot class 2410

variable	value.min	value.max	value.mean	value.median	value.sd
G01	4.00	6.00	4.67	4.00	0.87
G02	3.00	7.00	6.11	7.00	1.54
G03	4.00	7.00	6.33	7.00	1.00
G04	3.00	7.00	6.22	7.00	1.30
G05	4.00	7.00	6.22	6.00	0.97
G06	5.00	7.00	6.62	7.00	0.74
G07	6.00	7.00	6.88	7.00	0.35
G08	4.00	7.00	6.22	7.00	1.09
G09	3.00	7.00	5.78	6.00	1.30
G10	4.00	7.00	5.33	5.00	1.00
G11	5.00	7.00	6.50	7.00	0.93
G12	3.00	7.00	5.56	6.00	1.42
G13	5.00	7.00	6.12	6.00	0.83
G14	5.00	7.00	6.00	6.00	0.93
G15	4.00	7.00	6.25	7.00	1.16
G16	5.00	7.00	6.50	7.00	0.76
G17	4.00	7.00	5.44	6.00	1.42
G18	5.00	7.00	6.38	6.50	0.74

Table 12: Summary class 2410

### 3.12 Class 2433

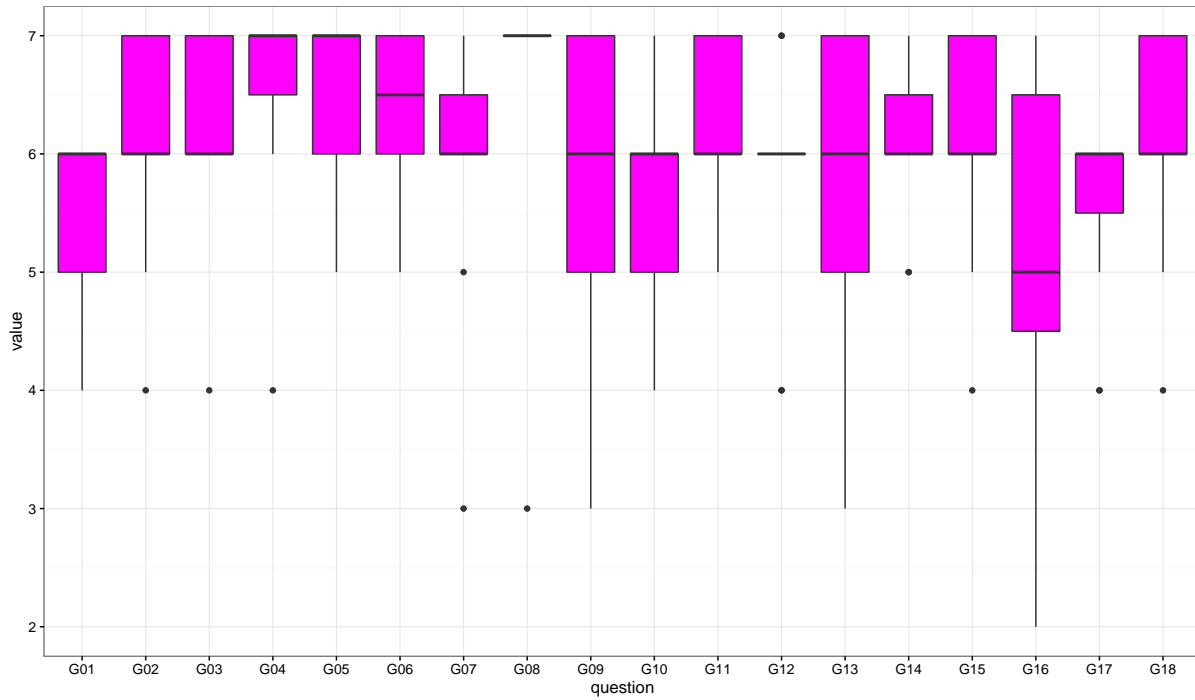


Figure 15: Boxplot class 2433

variable	value.min	value.max	value.mean	value.median	value.sd
G01	4.00	6.00	5.45	6.00	0.69
G02	4.00	7.00	6.09	6.00	0.94
G03	4.00	7.00	6.27	6.00	0.90
G04	4.00	7.00	6.55	7.00	0.93
G05	5.00	7.00	6.55	7.00	0.69
G06	5.00	7.00	6.30	6.50	0.82
G07	3.00	7.00	5.91	6.00	1.14
G08	3.00	7.00	6.60	7.00	1.26
G09	3.00	7.00	5.73	6.00	1.27
G10	4.00	7.00	5.64	6.00	0.81
G11	5.00	7.00	6.27	6.00	0.65
G12	4.00	7.00	5.82	6.00	0.98
G13	3.00	7.00	5.64	6.00	1.36
G14	5.00	7.00	6.09	6.00	0.70
G15	4.00	7.00	6.09	6.00	0.94
G16	2.00	7.00	5.27	5.00	1.56
G17	4.00	6.00	5.55	6.00	0.82
G18	4.00	7.00	6.10	6.00	0.99

Table 13: Summary class 2433

### 3.13 Class 2725

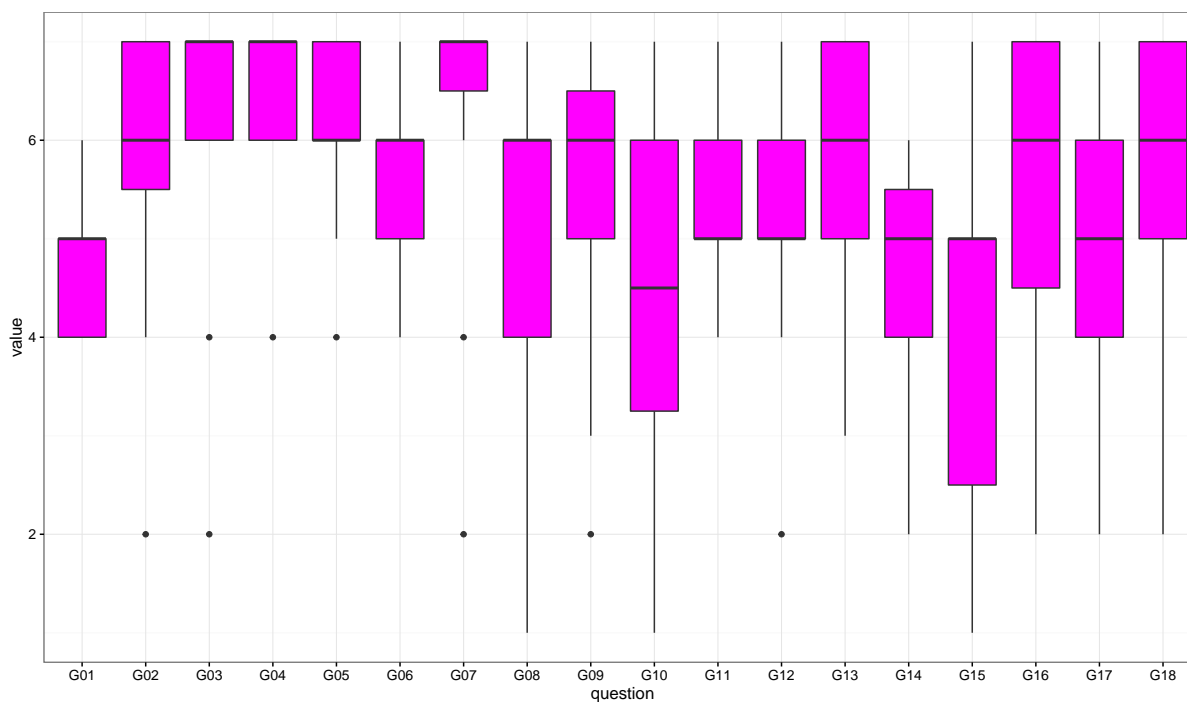


Figure 16: Boxplot class 2725

variable	value.min	value.max	value.mean	value.median	value.sd
G01	4.00	6.00	4.79	5.00	0.79
G02	2.00	7.00	5.89	6.00	1.37
G03	2.00	7.00	6.26	7.00	1.28
G04	4.00	7.00	6.47	7.00	0.77
G05	4.00	7.00	6.26	6.00	0.87
G06	4.00	7.00	5.74	6.00	0.93
G07	2.00	7.00	6.42	7.00	1.30
G08	1.00	7.00	5.05	6.00	1.84
G09	2.00	7.00	5.47	6.00	1.43
G10	1.00	7.00	4.67	4.50	1.94
G11	4.00	7.00	5.37	5.00	0.96
G12	2.00	7.00	5.37	5.00	1.21
G13	3.00	7.00	5.89	6.00	1.15
G14	2.00	6.00	4.63	5.00	1.16
G15	1.00	7.00	4.16	5.00	1.80
G16	2.00	7.00	5.47	6.00	1.65
G17	2.00	7.00	5.16	5.00	1.54
G18	2.00	7.00	5.74	6.00	1.41

Table 14: Summary class 2725



### 3.14 Class 2729

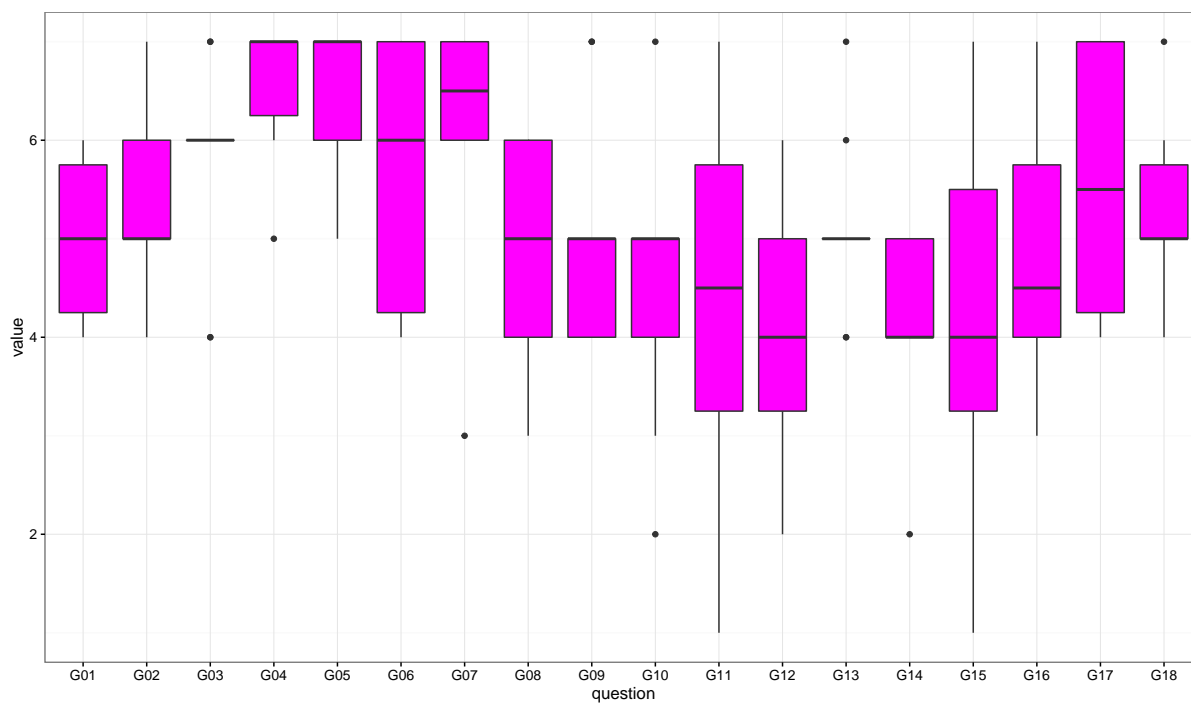


Figure 17: Boxplot class 2729

variable	value.min	value.max	value.mean	value.median	value.sd
G01	4.00	6.00	5.00	5.00	0.82
G02	4.00	7.00	5.40	5.00	1.07
G03	4.00	7.00	5.80	6.00	1.03
G04	5.00	7.00	6.60	7.00	0.70
G05	5.00	7.00	6.50	7.00	0.71
G06	4.00	7.00	5.70	6.00	1.34
G07	3.00	7.00	6.20	6.50	1.23
G08	3.00	6.00	4.90	5.00	1.10
G09	4.00	7.00	5.00	5.00	1.15
G10	2.00	7.00	4.50	5.00	1.35
G11	1.00	7.00	4.30	4.50	1.89
G12	2.00	6.00	4.20	4.00	1.32
G13	4.00	7.00	5.10	5.00	0.88
G14	2.00	5.00	4.22	4.00	0.97
G15	1.00	7.00	4.20	4.00	1.99
G16	3.00	7.00	4.80	4.50	1.48
G17	4.00	7.00	5.60	5.50	1.35
G18	4.00	7.00	5.30	5.00	0.82

Table 15: Summary class 2729

### 3.15 Class 2732

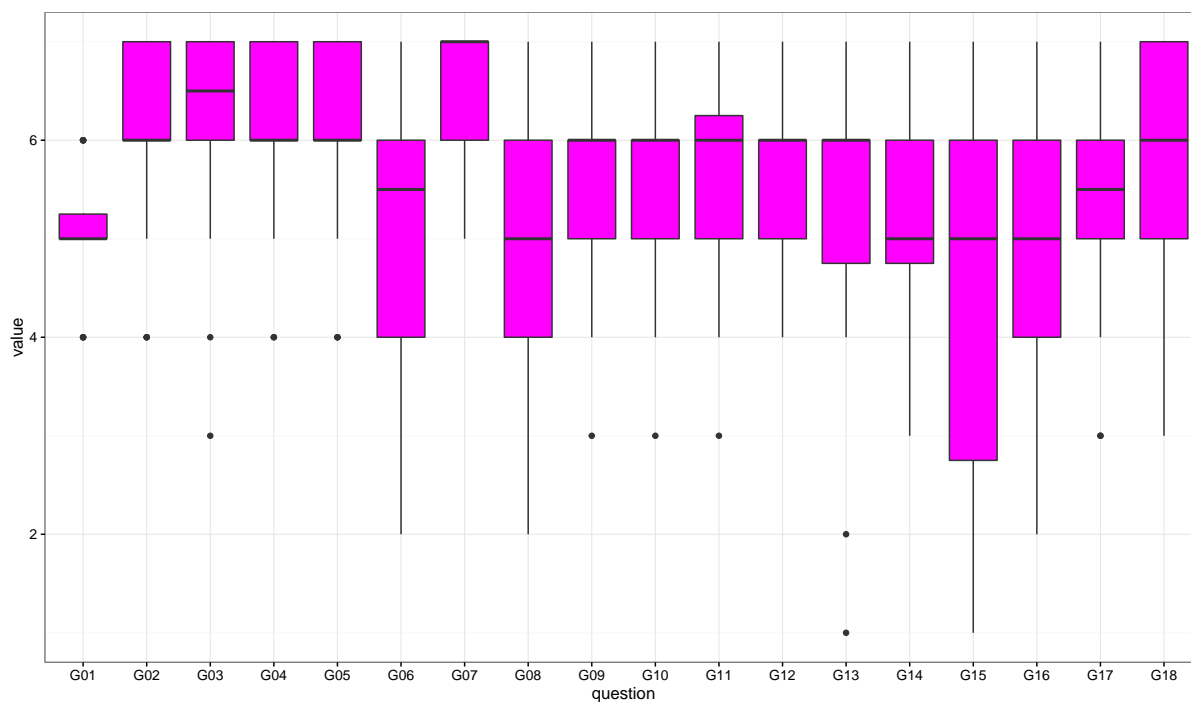


Figure 18: Boxplot class 2732

variable	value.min	value.max	value.mean	value.median	value.sd
G01	4.00	6.00	5.08	5.00	0.65
G02	4.00	7.00	6.08	6.00	1.02
G03	3.00	7.00	6.25	6.50	1.03
G04	4.00	7.00	6.08	6.00	0.93
G05	4.00	7.00	6.04	6.00	1.00
G06	2.00	7.00	5.25	5.50	1.42
G07	5.00	7.00	6.46	7.00	0.78
G08	2.00	7.00	4.88	5.00	1.23
G09	3.00	7.00	5.54	6.00	1.14
G10	3.00	7.00	5.42	6.00	0.97
G11	3.00	7.00	5.62	6.00	1.17
G12	4.00	7.00	5.58	6.00	0.97
G13	1.00	7.00	5.25	6.00	1.48
G14	3.00	7.00	5.04	5.00	0.91
G15	1.00	7.00	4.29	5.00	1.99
G16	2.00	7.00	5.00	5.00	1.57
G17	3.00	7.00	5.46	5.50	1.10
G18	3.00	7.00	5.75	6.00	1.15

Table 16: Summary class 2732

### 3.16 Class 2770

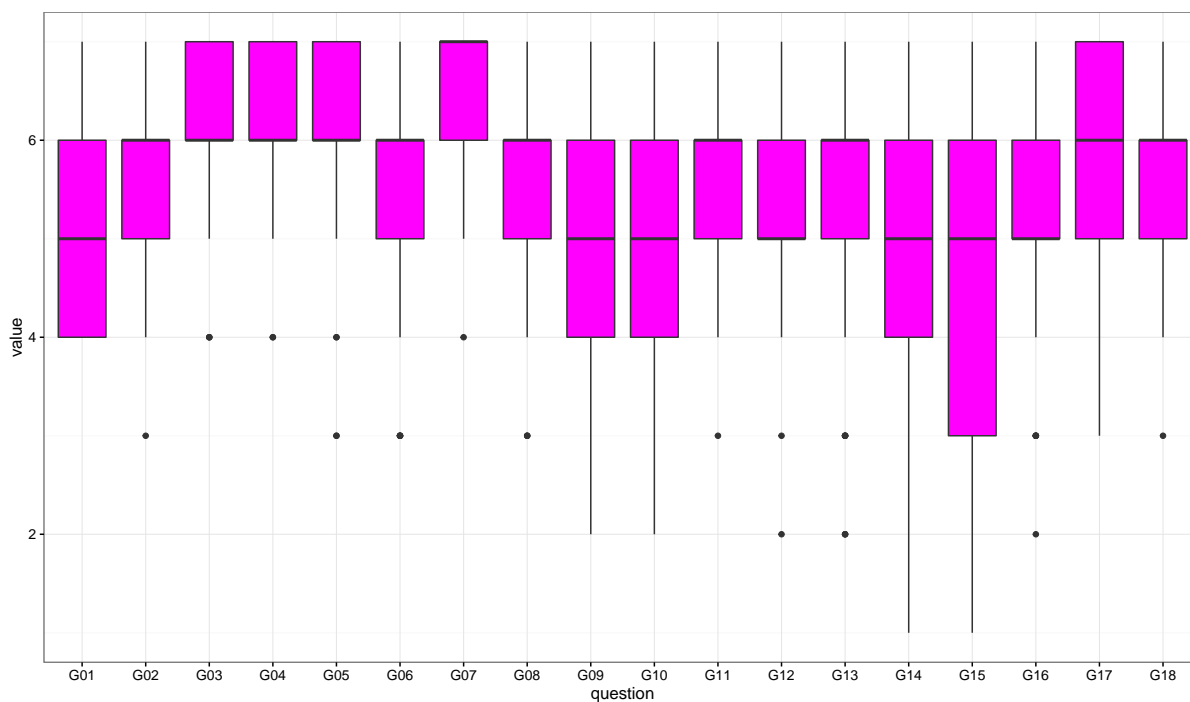


Figure 19: Boxplot class 2770

variable	value.min	value.max	value.mean	value.median	value.sd
G01	4.00	7.00	5.09	5.00	0.82
G02	3.00	7.00	5.80	6.00	0.98
G03	4.00	7.00	6.20	6.00	0.82
G04	4.00	7.00	6.24	6.00	0.79
G05	3.00	7.00	6.15	6.00	0.93
G06	3.00	7.00	5.43	6.00	1.15
G07	4.00	7.00	6.54	7.00	0.62
G08	3.00	7.00	5.65	6.00	1.02
G09	2.00	7.00	5.03	5.00	1.27
G10	2.00	7.00	5.04	5.00	1.20
G11	3.00	7.00	5.77	6.00	0.94
G12	2.00	7.00	5.29	5.00	0.97
G13	2.00	7.00	5.32	6.00	1.32
G14	1.00	7.00	4.97	5.00	1.58
G15	1.00	7.00	4.35	5.00	1.67
G16	2.00	7.00	5.24	5.00	1.16
G17	3.00	7.00	5.87	6.00	1.00
G18	3.00	7.00	5.67	6.00	0.88

Table 17: Summary class 2770

### 3.17 Class 3855

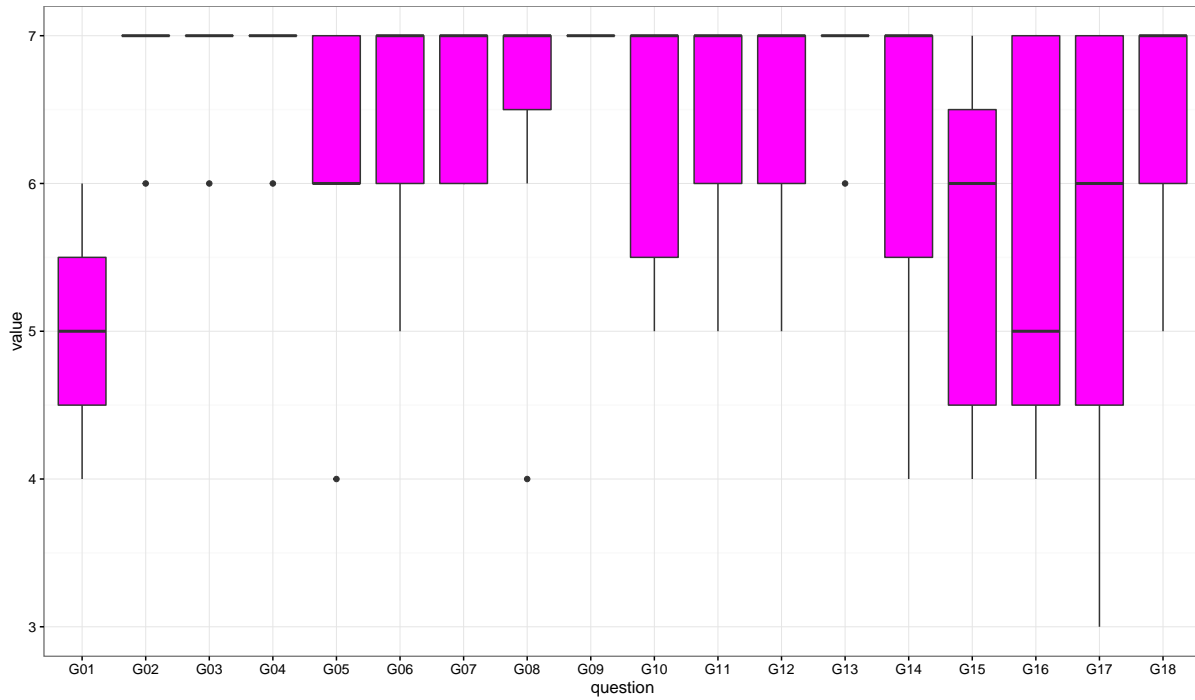


Figure 20: Boxplot class 3855

variable	value.min	value.max	value.mean	value.median	value.sd
G01	4.00	6.00	5.00	5.00	0.82
G02	6.00	7.00	6.86	7.00	0.38
G03	6.00	7.00	6.86	7.00	0.38
G04	6.00	7.00	6.86	7.00	0.38
G05	4.00	7.00	6.14	6.00	1.07
G06	5.00	7.00	6.43	7.00	0.79
G07	6.00	7.00	6.57	7.00	0.53
G08	4.00	7.00	6.43	7.00	1.13
G09	7.00	7.00	7.00	7.00	0.00
G10	5.00	7.00	6.29	7.00	0.95
G11	5.00	7.00	6.43	7.00	0.79
G12	5.00	7.00	6.43	7.00	0.79
G13	6.00	7.00	6.86	7.00	0.38
G14	4.00	7.00	6.14	7.00	1.21
G15	4.00	7.00	5.57	6.00	1.27
G16	4.00	7.00	5.57	5.00	1.40
G17	3.00	7.00	5.57	6.00	1.62
G18	5.00	7.00	6.43	7.00	0.79

Table 18: Summary class 3855

### 3.18 Class 3962

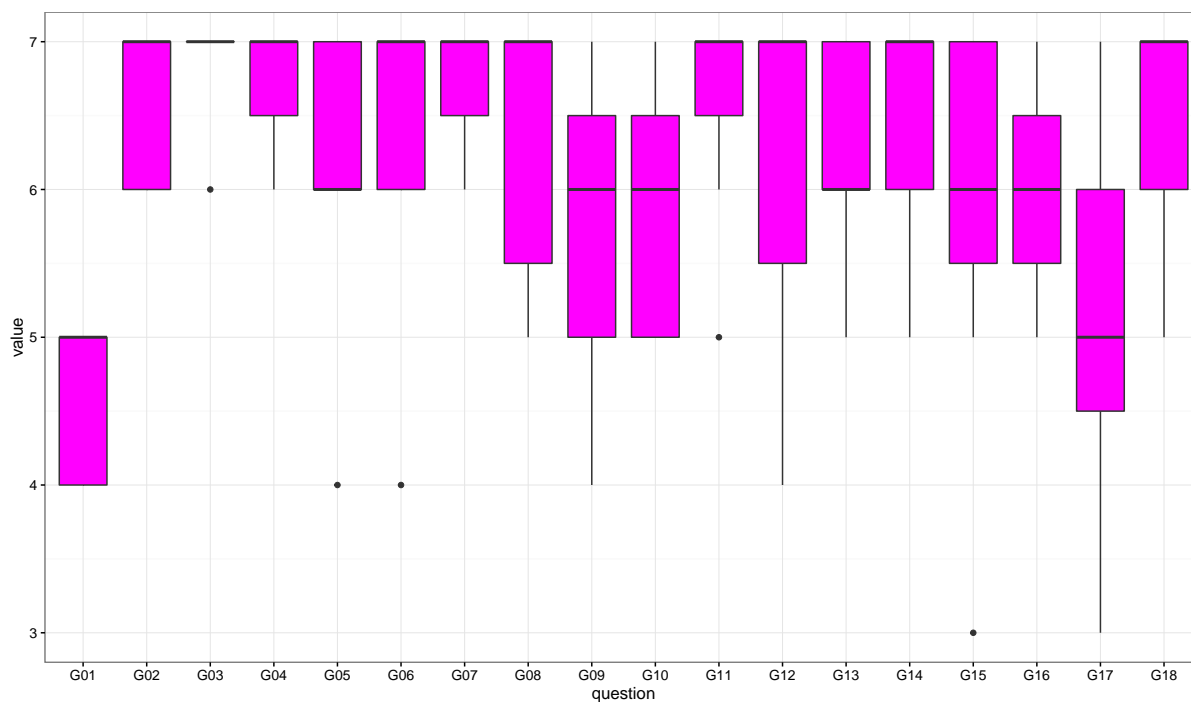


Figure 21: Boxplot class 3962

variable	value.min	value.max	value.mean	value.median	value.sd
G01	4.00	5.00	4.57	5.00	0.53
G02	6.00	7.00	6.57	7.00	0.53
G03	6.00	7.00	6.86	7.00	0.38
G04	6.00	7.00	6.71	7.00	0.49
G05	4.00	7.00	6.14	6.00	1.07
G06	4.00	7.00	6.29	7.00	1.11
G07	6.00	7.00	6.71	7.00	0.49
G08	5.00	7.00	6.29	7.00	0.95
G09	4.00	7.00	5.71	6.00	1.11
G10	5.00	7.00	5.86	6.00	0.90
G11	5.00	7.00	6.57	7.00	0.79
G12	4.00	7.00	6.14	7.00	1.21
G13	5.00	7.00	6.29	6.00	0.76
G14	5.00	7.00	6.43	7.00	0.79
G15	3.00	7.00	5.86	6.00	1.46
G16	5.00	7.00	6.00	6.00	0.82
G17	3.00	7.00	5.14	5.00	1.35
G18	5.00	7.00	6.43	7.00	0.79

Table 19: Summary class 3962